



Steel Fire-rated Doors and Multi-purpose Doors

NEW

Newly upgraded, safer and more reliable

HÖRMANN



Contents

Hörmann steel fire-rated doors · in accordance with GB 12955 – 2008

Hörmann steel fire-rated doors	4
HC 90N (Certified in 90 min. Max. opening size 2100 x 2400 mm)	6
Steel fire-rated doors Class A	HC 90NL (Certified in 90 min. Max. opening size 3000 x 3000 mm) 8
	HC 90XL (Certified in 90 min. Max. opening size 4000 x 4000 mm) 10
Steel fire-rated doors Class B	HC 60N (Certified in 60 min. fire resistance and heat insulation) 12
Steel fire-rated doors Class C	HC 30N (Certified in 30 min. fire resistance and heat insulation) 14
Steel multi-purpose doors	HHS 16
Hardware and optional parts	18
Glazing, louver, and top / side elements	22
Colors and surfaces	24
Hörmann service network	26

All rights reserved: Excerpts and copies are not allowed without permission.
Hörmann preserves the rights for any content change. Some of the doors shown are equipped with optional parts and do not always correspond to the standard models, cannot be regarded as binding.



Normal-open fire-rated doors along corridor

German quality



1

Automatic production line

High-precision automatic equipment is the guarantee of product quality. Hörmann fire-rated doors are produced by high-tech automatic production lines controlled by SAP management system; With the approach, the parameter standardization and digital management of the production from order input to finished product is realized. This ensures the premium quality and consistent performance of Hörmann products.



2

Inherited product quality

Hörmann has an 80-year history of producing fire-rated door since it first came out of Hörmann Germany in the 1940s. Hörmann China started fire door production with German-imported production line and technology from 1998. All fire-rated doors are certified in accordance with Chinese national standard GB 12955 - 2008. The design, production and after-sales service of Hörmann fire-rated doors are all strictly adhering to the requirement of ISO 9001 quality management system and provide you full confidence on safety assurance.



Fully upgraded N-series products



3

Nanoscale silicon composite tempered fireproof glass

Hörmann fireproof glass is produced by Germany-imported automatic production line. It possesses excellent stability and durability thanks to the composite of transparent tempered glass and nanoscale inorganic silicon refractory.

- Based on imported fireproof technology, it demonstrates stable and reliable fire protection performance;
- Tempered glass with high impact and bending strength, is highly transparent, not easy to break, and durable;
- Nanoscale refractory provides good fire and UV resistance properties; with the high light transmittance rate up to 86%, it has less risk of blistering and discoloration after long time use.

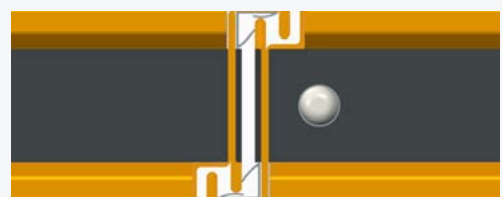


4

Coupling design for fire resistance and smoke tightness

Multiple smoke-tight design is applied for Hörmann fire-rated doors, which can prevent the spread of flames and smoke, and guard a precious life-saving passage for people evacuation in case of a fire emergency.

- The double-leaf door adopts coupling structure with a hook bending, effectively reducing the deformation of the door leaf caused by fire and high temperature, and improving the sealing performance;
- Dual fire-proof sealings with high thermal expansion performance are flush embedded on the three sides of door leaf.



Top view of double-leaf door

Steel fire-rated door HC 90N

Certified in 90 min. fire resistance and heat insulation



Stable coupling
design



Environment-friendly
materials



All-around
smoke protection



Durable hardware



Steel fire-rated door HC 90N

Max. opening size up to 1100 x 2400 mm / 2100 x 2400 mm



Door leaf thickness
62 mm



Certificate for Fire
Product Certification



Class A
Fire resistance and
heat insulation



Dual thermal
expansion sealing
for smoke tightness



Thermal insulation
1.9 W/(m²·K)



Acoustic insulation
36 dB



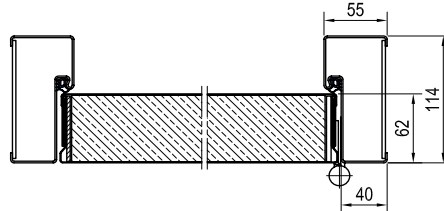
Air impermeability
Class 8



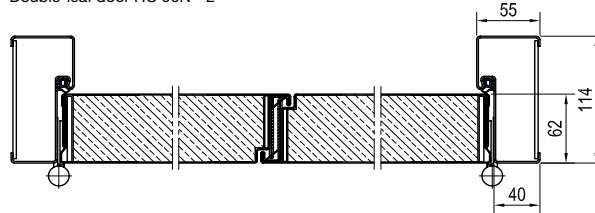
Wind load resistance
Class 7 for HC90N-1
Class 5 for HC90N-2

Cross section view

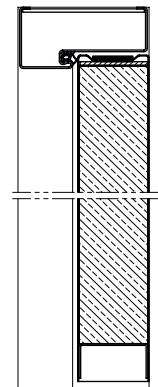
Single-leaf door HC 90N - 1



Double-leaf door HC 90N - 2



Vertical section view



Main configuration

Fire resistance and heat insulation time in hours	1.5
Leaf thickness	62 mm
Leaf steel sheet thickness	0.8 mm
Frame steel sheet thickness	1.5 mm
Frame depth	114 mm
Infill	Fireproof board
Lock	Fireproof lock HML 03
Handle set	SUS lever / lever handle set H-110 in short plate
Hinge	SUS fireproof hinge
Frame connection	90°

Tempered composite fireproof glazing

Glass type	Nano-silicon Class A
Glass thickness	Five-layer composite fireproof glass, 30 mm
Max. area	15% of the door leaf area
Max. width	≤ 220 mm
Max. height	≤ 1000 mm

Structural opening size limitation

	Width limitation	Height limitation
Single-leaf door	1100 mm	2400 mm
Double-leaf door	2100 mm	2400 mm

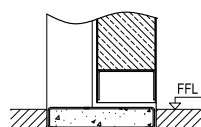
Other configurations

Hardware	Page 18-19
Glazing	Page 22-23
Colors and surfaces	Page 24-25

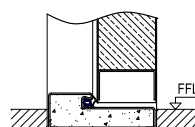
* The value of acoustic insulation, thermal insulation, air impermeability and wind load resistance were tested when the door is fitted with threshold with seal. The characteristics of air impermeability and wind load resistance are in accordance with GB/T 7106-2019.

Bottom sealing:

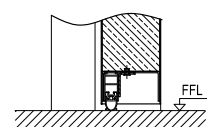
There are three bottom sealing methods to choose from. The threshold is available in SUS or galvanized steel.



Flat threshold



Threshold with seal



Retractable bottom seal

Steel fire-rated door HC 90NL

Certified in 90 min. fire resistance and heat insulation



Steel fire-rated door HC 90NL

Max. opening size up to 1500 x 3000 mm / 3000 x 3000 mm



Door leaf thickness
62 mm



Certificate for Fire
Product Certification



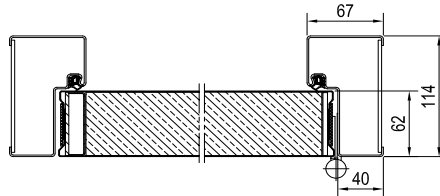
Class A
Fire resistance and
heat insulation



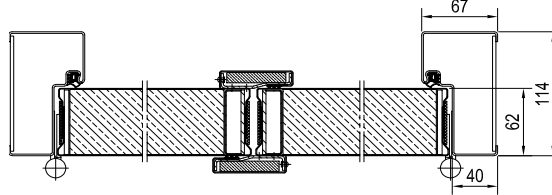
Dual thermal
expansion sealing
for smoke tightness

Cross section view

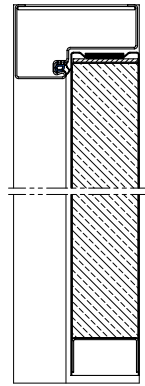
Single-leaf door HC 90NL - 1



Double-leaf door HC 90NL - 2



Vertical section view



Main configuration

Fire resistance and heat insulation time in hours	1.5
Leaf thickness	62 mm
Leaf steel sheet thickness	0.8 mm
Frame steel sheet thickness	1.5 mm
Frame depth	114 mm
Infill	Fireproof board
Lock	Fireproof lock HML 03
Handle set	SUS lever / lever handle set H-110 in short plate
Hinge	SUS fireproof hinge
Frame connection	90°

Meeting stile

Single-leaf door	-
Double-leaf door	Both sides

Tempered composite fireproof glazing

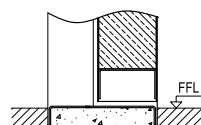
Glass type	Nano-silicon Class A
Glass thickness	Five-layer composite fireproof glass, 30 mm
Max. area	15% of the door leaf area
Max. width	≤ 220 mm
Max. height	≤ 1000 mm

Structural opening size limitation

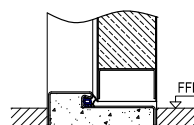
		Width limitation	Height limitation
Galvanised steel	Single-leaf door	1500 mm	3000 mm
	Double-leaf door	3000 mm	3000 mm
Stainless steel	Single-leaf door	1500 mm	3000 mm
	Double-leaf door	2900 mm	3000 mm

Bottom sealing:

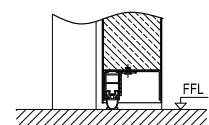
There are three bottom sealing methods to choose from. The threshold is available in SUS or galvanized steel.



Flat threshold



Threshold with seal



Retractable bottom seal

Other configurations

Hardware	Page 18-19
Glazing	Page 22-23
Colors and surfaces	Page 24-25

Steel fire-rated door HC 90XL

Certified in 90 min. fire resistance and heat insulation



Steel fire-rated door HC 90XL

Only double-leaf door available, max. opening size up to 4000 x 4000 mm



Door leaf thickness
70 mm



Certificate for Fire
Product Certification



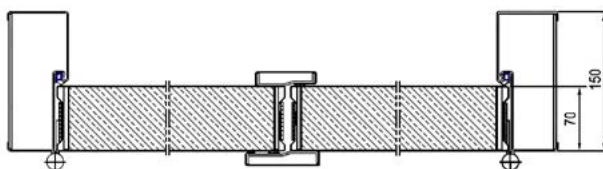
Class A
Fire resistance and
heat insulation



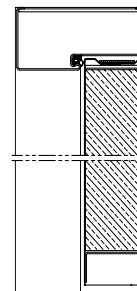
Dual thermal
expansion sealing
for smoke tightness

Cross section view

Double-leaf door HC 90XL - 2



Vertical section view



Main configuration

Fire resistance and heat insulation time in hours	1.5
Leaf thickness	70 mm
Leaf steel sheet thickness	1.0 mm
Frame steel sheet thickness	2.0 mm
Frame depth	150 mm
Infill	Fireproof board
Lock	Fireproof lock HML 03
Handle set	SUS lever / lever handle set D-110 in short plate
Hinge	SUS fireproof hinge
Frame connection	90°

Meeting stile

Double-leaf door	Both sides
------------------	------------

Tempered composite fireproof glazing

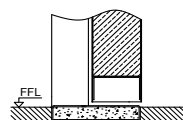
Glass type	Nano-silicon Class A
Glass thickness	Five-layer composite fireproof glass, 30 mm
Max. area	15% of the door leaf area
Max. width	≤ 280 mm
Max. height	≤ 1000 mm

Structural opening size limitation

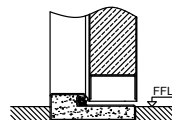
	Width limitation	Height limitation
Double-leaf door	4000 mm	4000 mm

Other configurations

Hardware	Page 18-19
Glazing	Page 22-23
Colors and surfaces	Page 24-25



Flat threshold



Threshold with seal

Threshold:

There are two versions of thresholds to choose from, available in galvanized steel.

Steel fire-rated door HC 60N

Certified in 60 min. fire resistance and heat insulation



Steel fire-rated door HC 60N



Door leaf thickness
62 mm



Certificate for Fire
Product Certification



Class B
Fire resistance and
heat insulation



Dual thermal
expansion sealing
for smoke tightness



Thermal insulation
1.9 W/(m²·K)



Acoustic insulation
36 dB



Air impermeability
Class 8



Wind load resistance
Class 7 for HC60N-1
Class 5 for HC60N-2

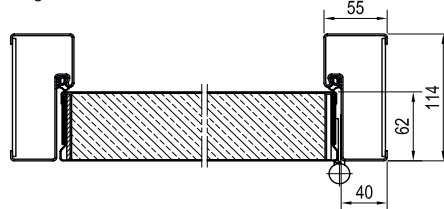
Other configurations

Hardware	Page 18-19
Glazing	Page 22-23
Colors and surfaces	Page 24-25

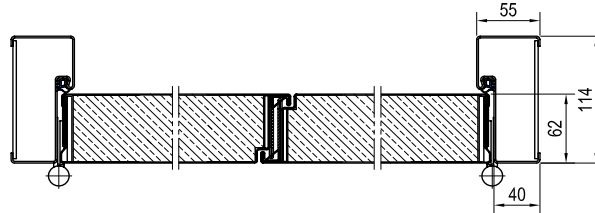
* The value of acoustic insulation, thermal insulation, air impermeability and wind load resistance were tested when the door is fitted with threshold with seal. The characteristics of air impermeability and wind load resistance are in accordance with GB/T 7106-2019.

Cross section view

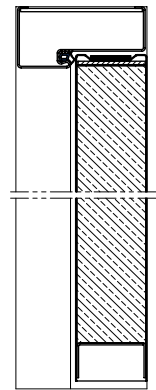
Single-leaf door HC 60N - 1



Double-leaf door HC 60N - 2



Vertical section view



Main configuration

Fire resistance and heat insulation time in hours	1.0
Leaf thickness	62 mm
Leaf steel sheet thickness	0.8 mm
Frame steel sheet thickness	1.5 mm
Frame depth	114 mm
Infill	Fireproof board
Lock	Fireproof lock HML 03
Handle set	SUS lever / lever handle set H-110 in short plate
Hinge	SUS fireproof hinge
Frame connection	90°

Tempered composite fireproof glazing

Glass type	Nano-silicon Class A
Glass thickness	Three-layer composite fireproof glass, 20 mm
Max. area	15% of the door leaf area
Max. width	≤ 220 mm
Max. height	≤ 1000 mm

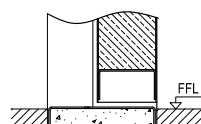
Structural opening size limitation *

	Width limitation	Height limitation
Single-leaf door	1100 mm	2400 mm
Double-leaf door	2100 mm	2400 mm

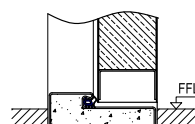
* The maximum opening size of steel fire-rated door HC 60XXL is up to 4600 × 5000 mm. Please consult for details if required. Glazing is not available for HC 60XXL.

Bottom sealing:

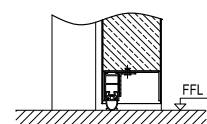
There are three bottom sealing methods to choose from. The threshold is available in SUS or galvanized steel.



Flat threshold



Threshold with seal



Retractable bottom seal

Steel fire-rated door HC 30N

Certified in 30 min. fire resistance and heat insulation



Steel fire-rated door HC 30N



Door leaf thickness
62 mm



Certificate for Fire
Product Certification



Class C
Fire resistance and
heat insulation



Dual thermal
expansion sealing
for smoke tightness



Thermal insulation
1.9 W/(m²·K)



Acoustic insulation
36 dB



Air impermeability
Class 8



Wind load resistance
Class 7 for HC30N-1
Class 5 for HC30N-2

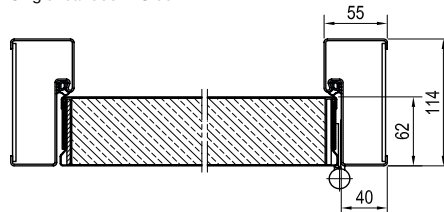
Other configurations

Hardware	Page 18-19
Glazing	Page 22-23
Colors and surfaces	Page 24-25

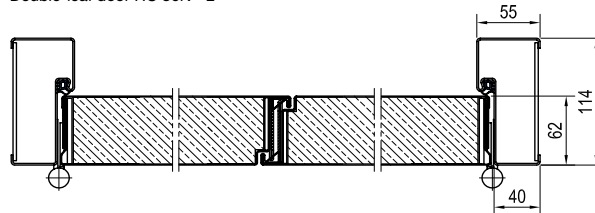
* The value of acoustic insulation, thermal insulation, air impermeability and wind load resistance were tested when the door is fitted with threshold with seal. The characteristics of air impermeability and wind load resistance are in accordance with GB/T 7106-2019.

Cross section view

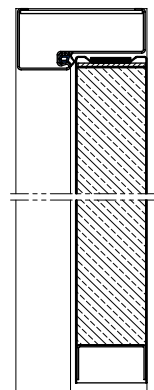
Single-leaf door HC 30N - 1



Double-leaf door HC 30N - 2



Vertical section view



Main configuration

Fire resistance and heat insulation time in hours	0.5
Leaf thickness	62 mm
Leaf steel sheet thickness	0.8 mm
Frame steel sheet thickness	1.5 mm
Frame depth	114 mm
Infill	Fireproof board
Lock	Fireproof lock HML 03
Handle set	SUS lever / lever handle set H-110 in short plate
Hinge	SUS fireproof hinge
Frame connection	90°

Tempered composite fireproof glazing

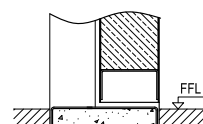
Glass type	Nano-silicon Class A
Glass thickness	Three-layer composite fireproof glass, 20 mm
Max. area	15% of the door leaf area
Max. width	≤ 220 mm
Max. height	≤ 1000 mm

Structural opening size limitation

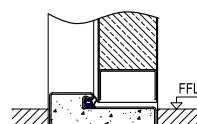
	Width limitation	Height limitation
Single-leaf door	1100 mm	2400 mm
Double-leaf door	2100 mm	2400 mm

Bottom sealing:

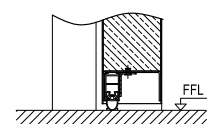
There are three bottom sealing methods to choose from. The threshold is available in SUS or galvanized steel.



Flat threshold



Threshold with seal



Retractable bottom seal

Steel multi-purpose doors HHS

With flexible options to meet different functional requirements



Steel multi-purpose doors HHS



Door leaf thickness
50 mm



Thermal insulation
 $1.8W/(m^2 \cdot K)$



Acoustic insulation
34 dB



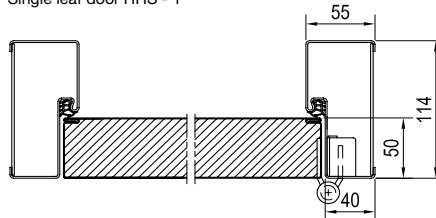
Air impermeability
Class 8



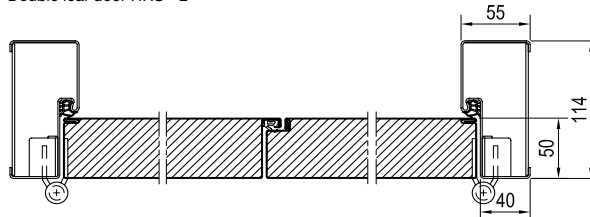
Wind load resistance
Class 7 for HHS-1
Class 5 for HHS-2

Cross section view

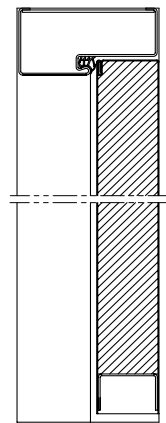
Single leaf door HHS - 1



Double leaf door HHS - 2



Vertical section view



Main configuration

Leaf thickness	50 mm
Leaf steel sheet thickness	0.6 / 0.8 mm
Frame steel sheet thickness	1.5 mm
Frame depth	114 mm (90 ~ 500 mm available)
Infill	Paper honeycomb / mineral wool
Lock	HML02
Handle set	Black nylon lever / lever handle set H-110 in short plate
Hinge	3D-120 SUS adjustable hinge
Frame connection	90°
Meeting stile	Optional for double-leaf door

Structural opening size limitation

		Width limitation	Height limitation
Galvanised steel	Single-leaf door	1500 mm	3000 mm
	Double-leaf door	2850 mm	3000 mm
Stainless steel	Single-leaf door	1450 mm	3000 mm
	Double-leaf door	2800 mm	3000 mm

Optional configuration

Glazing, louvers, top/side elements, door closers, electric strike, smart locks, etc.

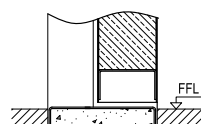
Other configurations

Hardware	Page 20-21
Glazing	Page 22-23
Colors and surfaces	Page 24-25

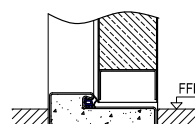
* The performance characteristics were tested when the door is infilled with mineral wool and fitted with threshold with seal. The characteristics of air impermeability and wind load resistance are in accordance with GB/T 7106-2019.

Bottom sealing:

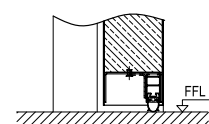
There are three bottom sealing methods to choose from. The threshold is available in SUS or galvanized steel.



Flat threshold



Threshold with seal



Retractable bottom seal

Fireproof hardware for fire-rated doors

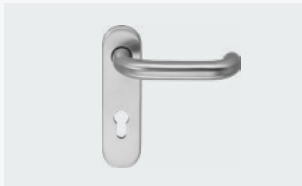
Reliable hardware is the guarantee of life safety



Fire door is an important facility to provide free passage and safe evacuation exit in case of fire; reliable hardware is the key component for fire door and plays an important role at critical moment. Hörmann provides a variety of high quality fireproof hardware to protect your safety alongside the fire alarm system and emergency escape system.

SUS handle set and knob

Hundreds of thousands opening and closing cycles for safe and long service life guarantee



Lever / lever handle set
H-110 in short plate / rose
D-110 in short plate / rose



Lever / lever handle set
D-310 in short plate / rose



Lever / lever handle set
D-410 in rose



Lever / knob handle set
D-110 / K-130 in short plate / rose
D-310 / K-130 in short plate / rose
D-410 / K-130 in rose

Door closer and selector

Safe and correct door closing after passing is an important prerequisite of fire protection during critical moment



Door closer with arm



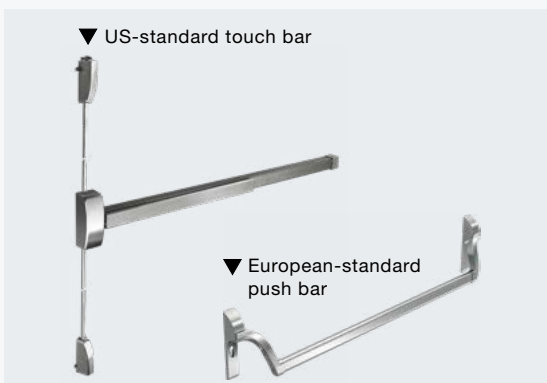
Door closer with sliding rail



Door selector

Anti-panic bar

Press the bar to quickly open the locked door and escape



Function D: with lever handle set on outdoor side, applied for doors of public passage way

Function E: with knob on outdoor side, applied for doors with access control

SUS hinge

With reinforced design and stainless steel laser welding process



Integrated maintenance-free ball bearing technology; Load bearing capacity meets the requirements of EN 1935, grade 14 (the highest level).

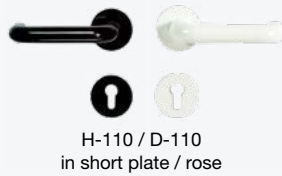
Hardware for steel multi-purpose doors

More choices with rich configurations



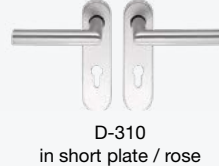
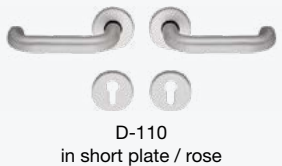
Nylon handle set

High-quality nylon handle sets are available in black, red, and white.



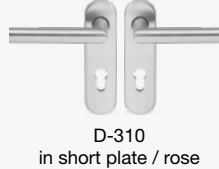
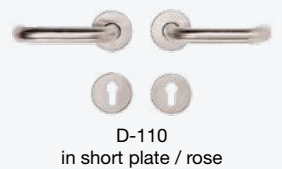
Aluminum handle set

All aluminum handle sets are anodized in a fine and smooth finish.



Stainless steel handle set

Made of high-quality stainless steel, it remains as lustrous and durable as ever.



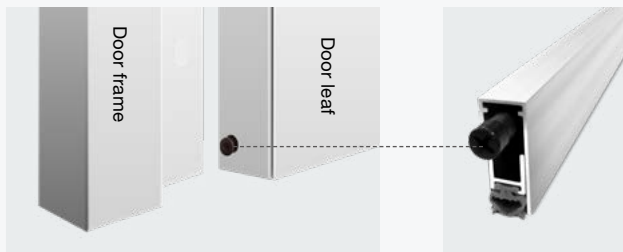
SUS 3D adjustable hinge

Oil-free design eliminates the hassle of oil leakage and insufficient lubrication. EN1935 certified, with a service life of 200,000 cycles and a load-bearing capacity of 160 kg.



Retractable bottom seal

The bottom sealing is embedded in the bottom of the door leaf, automatically sinking and sealing when closing the door, and retracting when opening the door. No bottom frame is needed, easy to clean.



Electric strike

Electric strike is fitted into the locking plate to achieve the access control function. It can be easily controlled by a push button, card reader, or code switch.



Glazing, louver, and top/side elements

Meet the needs for visibility, brightness, and ventilation



Glazing for steel fire-rated doors

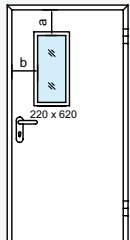


Fig. 1

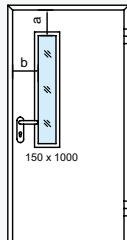


Fig. 2

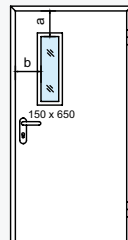
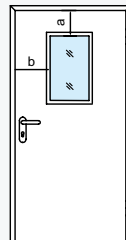


Fig. 3



Glazing to choose

Glazing size parameters	Height of door ≤ 2100 mm	Height of door > 2100 mm
a	= 200 mm	= H - 1900 mm
b	≥ 195 mm	≥ 195 mm
c	≥ 400 mm	≥ 400 mm

Glazing for steel multi-purpose doors

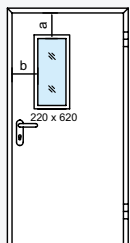


Fig. 1

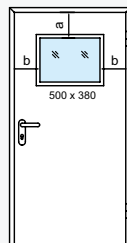


Fig. 4

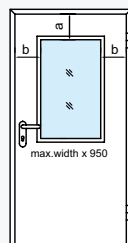


Fig. 5

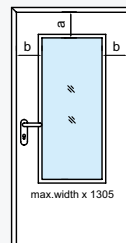
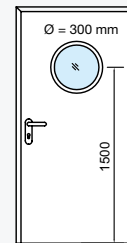
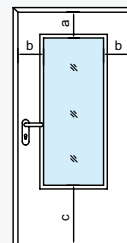
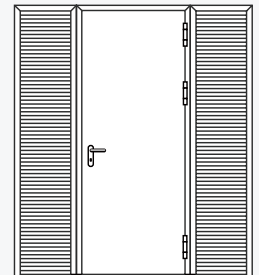
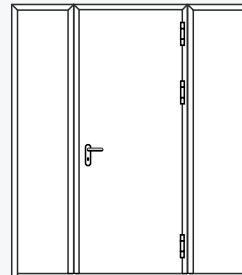
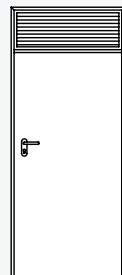
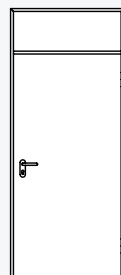
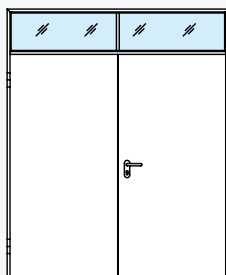
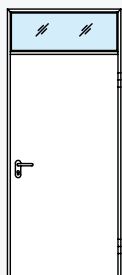


Fig. 6

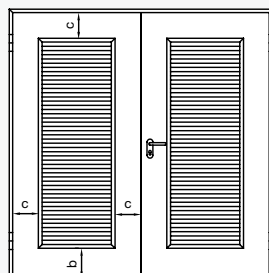
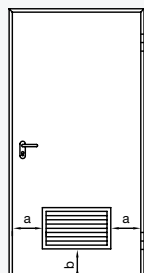
Glazing to choose Round glazing



Top light / top panel / steel top louver / side panel / steel side louver * (available for multi-purpose door HHS)



Steel louver (available for multi-purpose door HHS)



Please note critical dimensions below when ordering:

a ≥ 150 mm

b ≥ 150 mm

c ≥ 200 mm

* If the structural opening width is ≥ 2500 mm or the area of top light / top louver is ≥ 2 m², a mullion will be applied.

Diverse surfaces

Full range colors and surfaces for your choice

Powder Coating Surface

The smooth appearance of coating provided by the advanced powder coating line gives the steel doors a superb appearance. We offer a wide spectrum of nearly 200 colors to bring different atmospheres. 58 classic colors are specially recommended to help match various design styles more easily and quickly.



Decograin Surface - Range 1 & Range 2

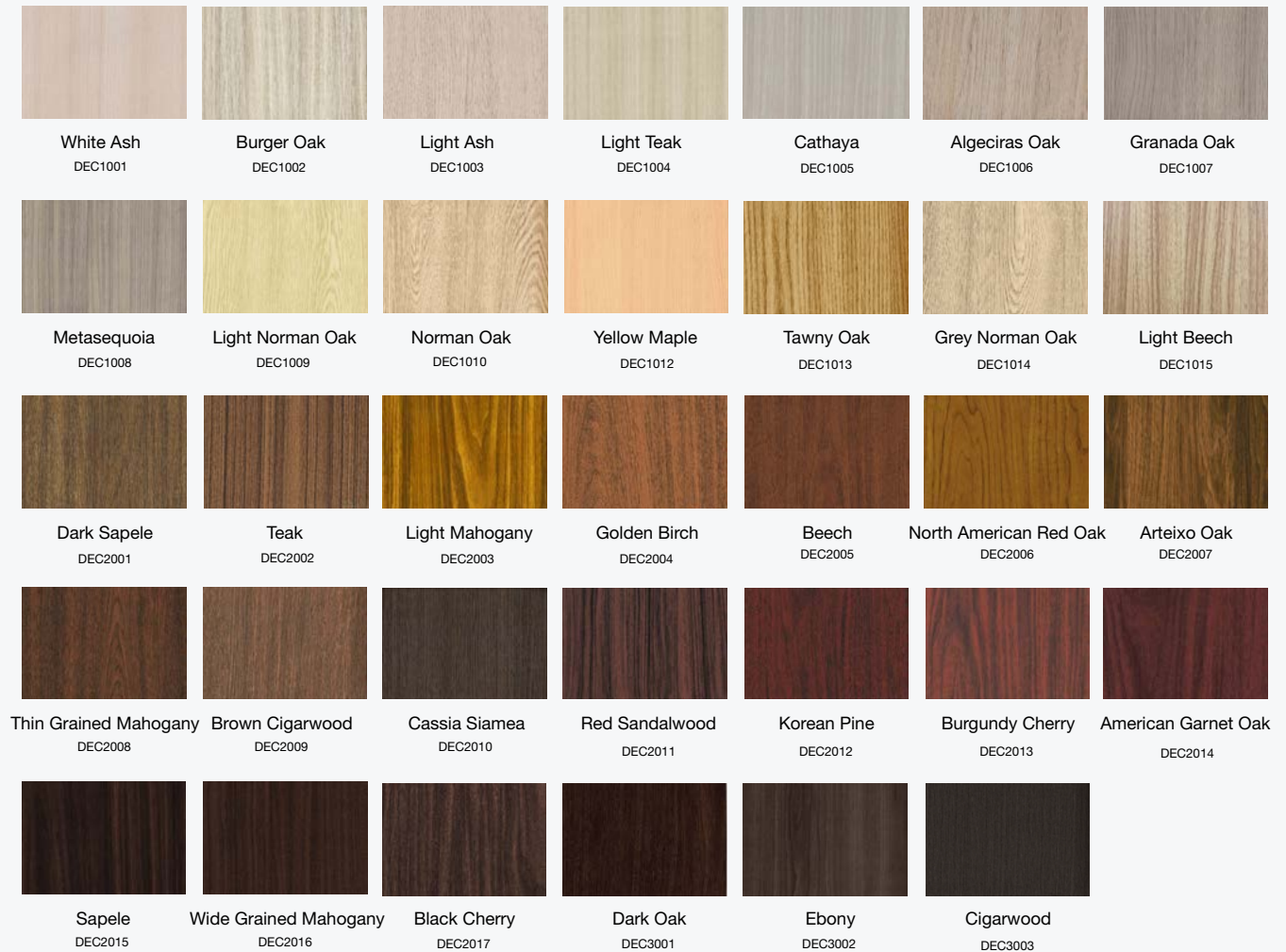
Our fine Decograin film is tightly attached to the galvanized steel sheet of door leaf through an advanced heat-pressing procedure. The foil-coated timber designs, with UV resistance and good durability, not only boast a natural-looking appearance, but are also easy to maintain.



- * 1. Fire-rated doors HC 90N, HC 90NL, HC 60N, HC 30N are available in Powder Coating surfaces, Decograin surfaces in Range 1, Range 2, Range 3, and Silkgrain surfaces in Range 1.
- 2. Multi-purpose door HHS are available in Powder Coating surfaces, Decograin surfaces in Range 1 and Range 2.
- 3. Fire-rated door HC 90XL is available in Powder Coating surfaces.
- 4. Colors and surface finishes illustrated are subject to the limitations of the printing process and deviate from the actual effects. Please contact Hörmann sales for more details about colors and surfaces.

Decograin Surface - Range 3

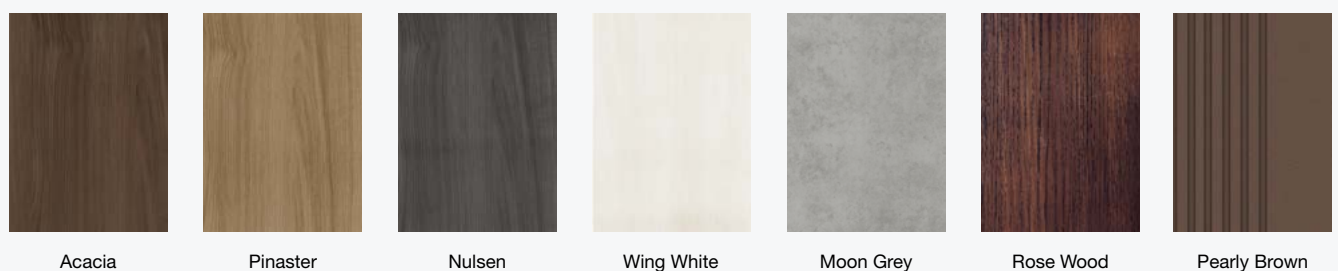
Various Decograin surfaces with flexible textures and colors, present natural 3D wood patterns and create a cozy atmosphere. Certified by German SKZ, it guarantees excellent outdoor weather resistance, color fastness, and ease of cleaning and maintenance.



Silkgrain Surface - Range 1

Silkgrain is a new steel sheet surface achieved by advanced 3D print pre-coating technology (PPM), overprinting layer by layer, presenting natural and realistic textures and 3D sense of touch.

The surfaces comply with the SVHC testing requirements of REACH regulation, and obtain the environmental certification of RoHS.



Hörmann China service network system

Since entering into China in 1998, Hörmann has always adhered to deeply cultivating the Chinese market, providing trustworthy products and solutions, and introducing German technology and service philosophy. We continuously explore, practice and innovate, and establish a comprehensive service network.

Hörmann provides clients with full lifecycle manufacturer-level services, including selection guide, design, measurement, installation, and aftersales service.



Germany service philosophy

- ★ Advanced technology and service philosophy originated from Germany.



Authoritative technical support

- ★ Experienced pre-sales consultation;
- ★ Standardized and customized solutions.



Reliable installation service

- ★ Well-trained installation team;
- ★ Standard installation procedure;
- ★ Strict acceptance inspection.



Professional after-sales service

- ★ Installation guidance and debugging services;
- ★ Repair and maintenance services.



400 hotline

- ★ Considerate customer service support;
- ★ +86 400 6507 888.



Manufacturer-level service

- ★ Factories in Beijing, Tianjin, and Changshu provide professional service support;
- ★ Adequate spare parts reserves.



● Technical headquarters ● Service coverage



We provide a complete range of solutions with all the additional support you need to successfully implement your grand plan with our high-quality products.



Hörmann: Quality without Compromise



Hörmann KG Amshausen, Germany



Hörmann KG Antriebstechnik, Germany



Hörmann KG Brandis, Germany



Hörmann KG Brockhagen, Germany



Hörmann KG Dissen, Germany



Hörmann KG Eckelhausen, Germany



Hörmann KG Freisen, Germany



Hörmann KG Ichtershausen, Germany



Hörmann Alkmaar B.V., Netherlands



Hörmann Legnica Sp. z o.o., Poland



Hörmann LLC, Montgomery IL, USA



Hörmann Flexon LLC, Burgettstown PA, USA



Hörmann Beijing, China



Hörmann Tianjin, China



Hörmann Changshu, China



Shakti Hörmann Ltd. India

Hörmann is a professional manufacturer worldwide that offers you a complete range of major building products from one source.

We manufacture in specialized factories using the advanced production technologies.

The comprehensive manufacturing, sales and service network in Europe, Asia and America makes Hörmann your strong international partner for the high-quality construction.

“Quality without Compromise”.

GARAGE DOORS

OPERATORS

DOORS

PARTITION WALLS

INDUSTRIAL DOORS

LOADING TECHNOLOGY



We produce as certified

www.hoermann.cn

Issue: 05.2025 / Print 05.2025 / 112120262

Some of the doors shown in this brochure have special features and therefore do not always represent the standard version.

Copyright. No part of this brochure may be reproduced without our permission. Subject to changes.